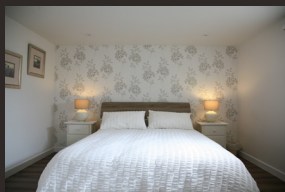


Satara COTTAGE



LUXURY SELF CATERING

www.sataracottage.co.uk





Weybourne is a pretty coastal village located on the North Norfolk coast. Not only is the village a part of the Norfolk Coast Area of Outstanding Natural Beauty and a designated conservation area, but it boasts the ruins of an Augustinian priory stand in the grounds of the 15th century church. The beach consists of pebbles and marks the start of the cliff section of the Norfolk coast.

Weybourne is a haven for walkers, birdwatchers and fishermen alike, and it is well located for days out in the area. The village itself boasts a well stocked village store/delicatessen, a pub, a military museum and a church.

With its beautiful landscapes and numerous places of interest, North Norfolk offers something for everyone!.





Satara is a newly built (2016) luxurious flint cottage located in a secluded section of the Jericho House property. It is a great location - only a couple of minutes walk to the central part of the village and a 10 minute walk to the beach.

Satara is a one bedroom cottage, with a private patio and garden, situated under some beautiful horse chestnut and beech trees.

It is spacious, modern yet cosy, light and well appointed with new fixtures and fittings. There is also under floor heating throughout the cottage. It is perfect for an all year round break.

Satara has a flexible stay policy (minimum 3 nights).

Bedroom

Comes with a king size bed.

Bathroom

Full length bath and large drench shower.

Open plan kitchen and sitting room

Beautiful granite worktop, slim line dishwasher, washing machine, induction hob cooker, microwave, and fridge/freezer. Large flat screen TV with Free Sat, DVD player with a selection of DVDs, wall mounted electric fire.

Garden

Patio table, chairs and sun loungers.

Extras

- Free WiFi
- Off road, private parking for Satara Cottage.
- A starter kit with tea, coffee, sugar, milk as well as some basic kitchen essentials (fairy liquid, tea towels etc).
- A cot and highchair are available on request.

"We have stayed in many holiday cottages and this is at the top of the list! Very comfortable and beautifully furnished. We hope to return and will recommend. Thank you". Margaret & Les, Mar 2017

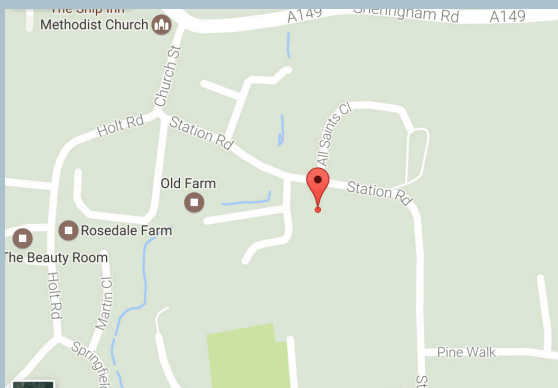
"What a lovely cottage! So clean & well furnished. It's so peaceful - just the birds. Lovely walk to the beach. We had a great stay and would recommend it to anyone. We will be returning soon. Thank you!"
Nigel & Jean, May 2017

RATE

| Tariffs | Week | Short break* |
|-------------|-----------|--------------|
| Low season | £395 | £200-£225 |
| Mid season | £475-£495 | £250-£275 |
| High season | £550-£625 | £325-£350 |

*Short break is Friday to Monday or Monday to Friday

HOW TO FIND US



Jericho House, Station Road,
Weybourne, NR25 7HE

T: 07717 300 538 E: Joll.felicity@gmail.com